

**CO₂ on a one-way trip.
Details at 1 PM.**

Tim Grant, Dave Morgan, Andrea Poe, Jason Valenstein, Richard Lawrence

Carbon Storage R&D Project Review Meeting
August 20-22, 2013

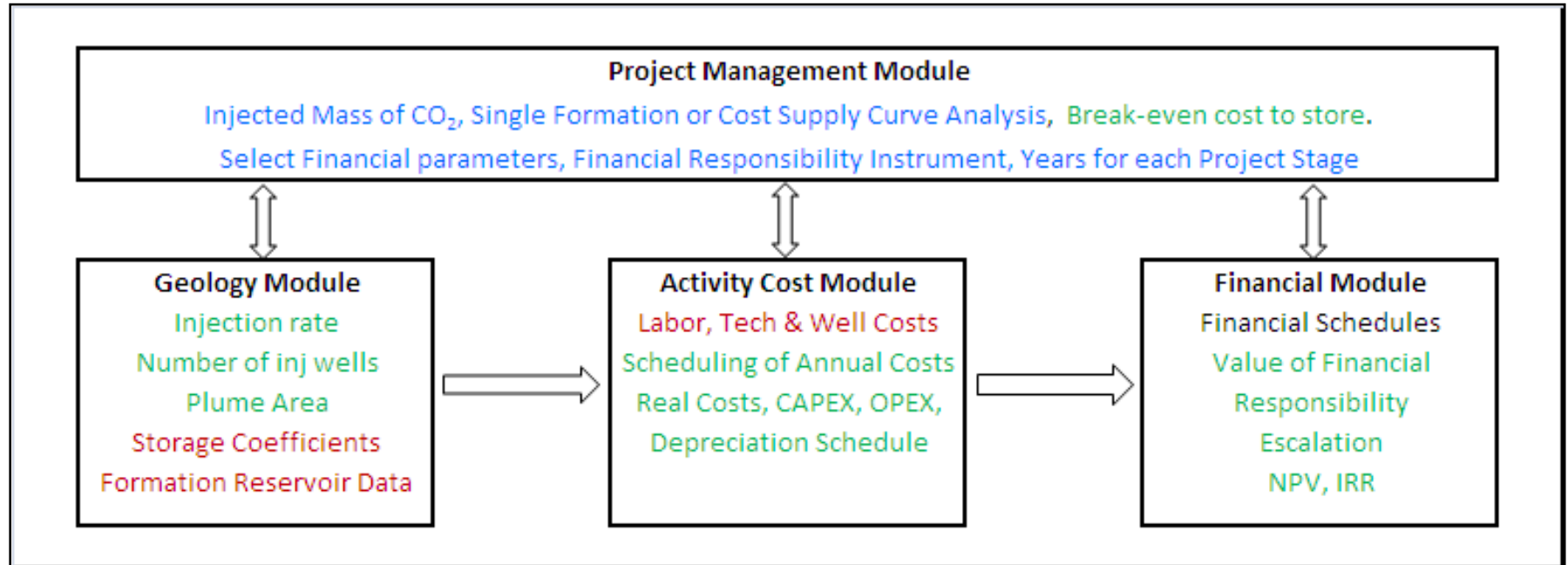
FE/NETL CO₂ Saline Storage Cost Model

- **What is it?**

- Spreadsheet-based
- Based on compliance framework for EPA's UIC Class VI rules
- NOT a reservoir model, but does include basic geologic data for 218 "reservoirs" across 65 formations in 32 basins (25 states)
 - e.g., depth, thickness, permeability, porosity, storage coefficient
- On-shore storage for lower 48 states
- Provides cost analysis of single reservoir
- Provides data to create CO₂ storage cost-supply curves at formation, basin, regional and national levels

FE/NETL CO₂ Saline Storage Cost Model

Model Structure



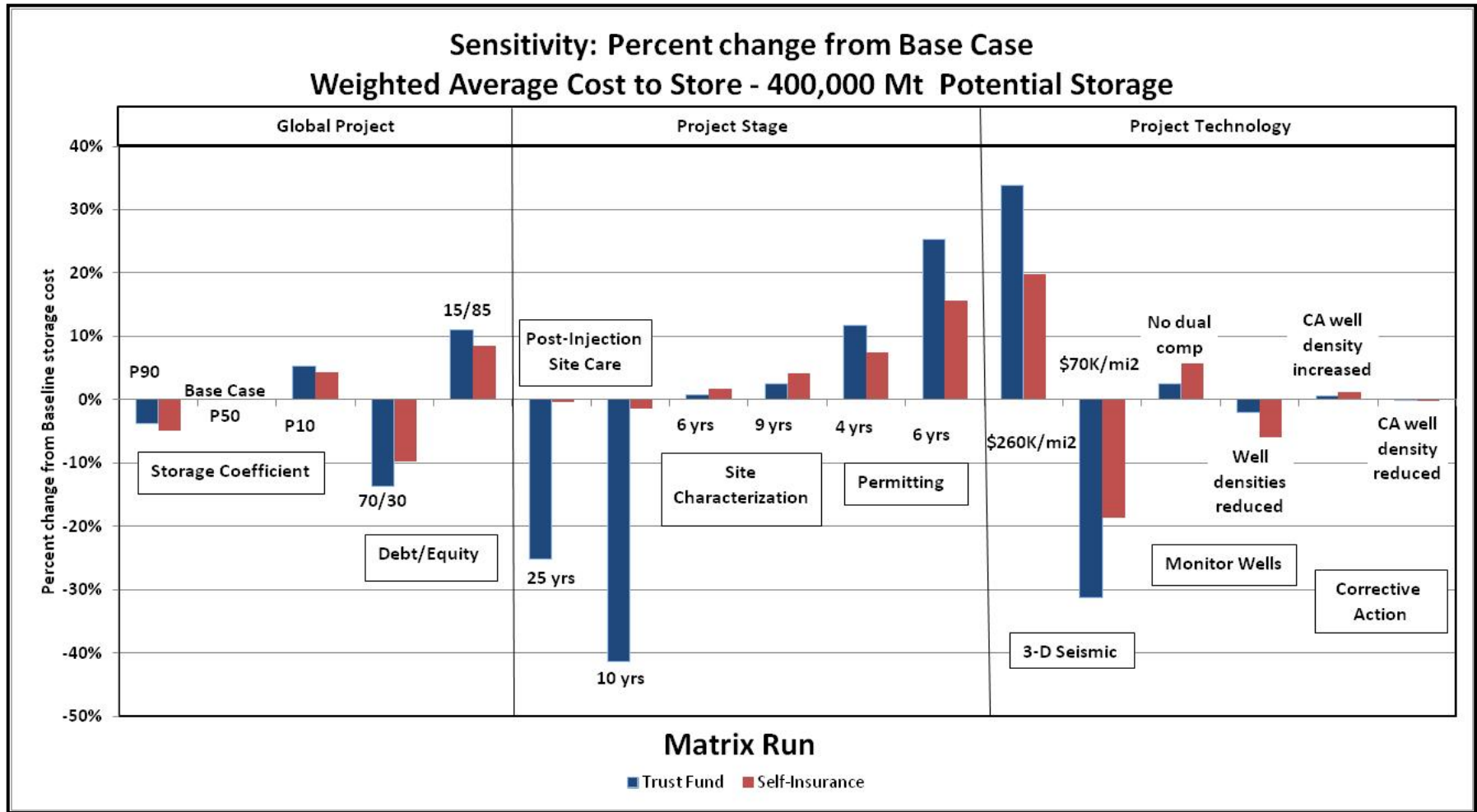
User Defined – parameters determined or selected by user

Calculated – calculated values based on data provided

Provided – data already in model but can be edited by user

FE/NETL CO₂ Saline Storage Cost Model

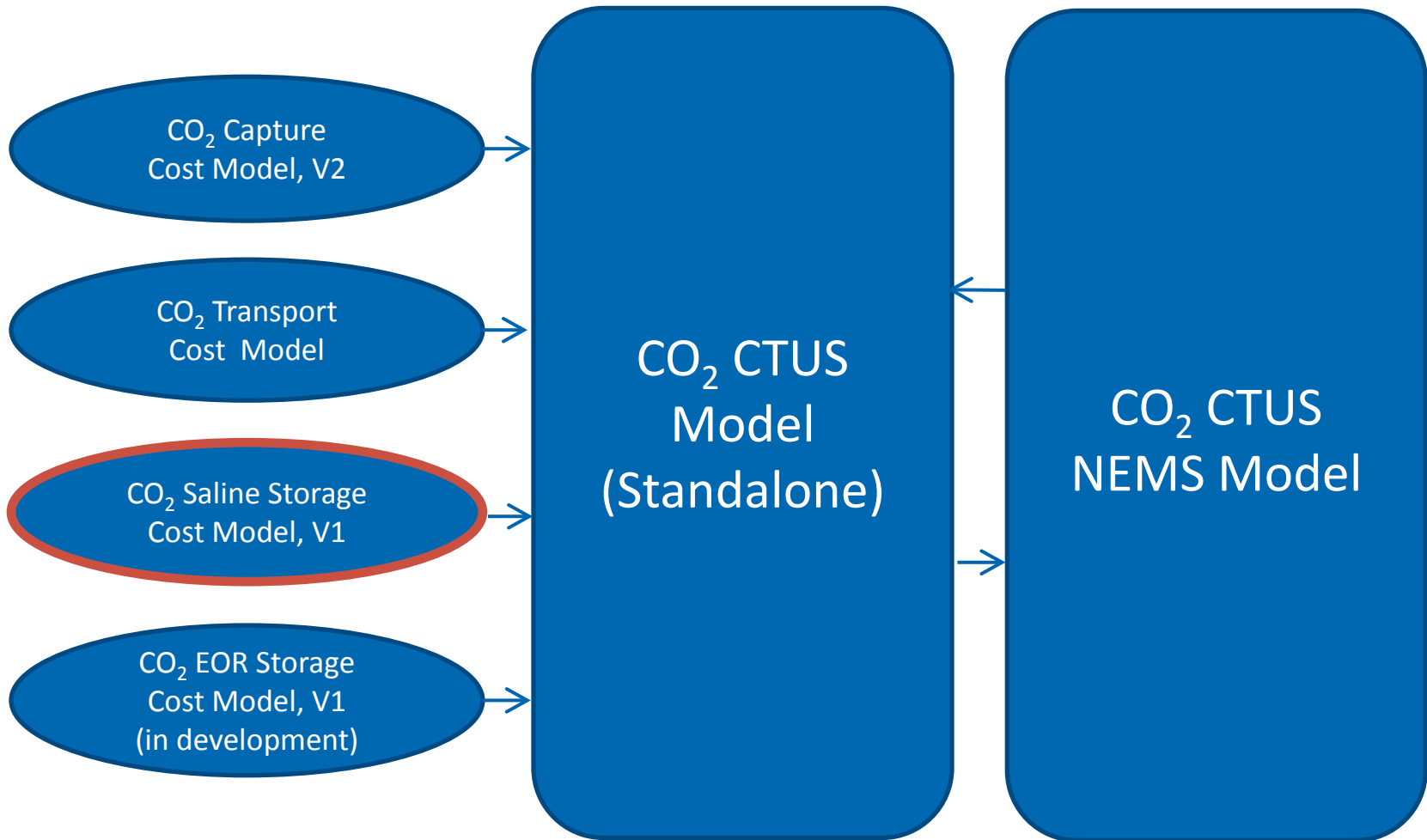
CO₂ Storage Cost Sensitivity Analysis



Matrix designed to test various aspects/parameters of the model.

FE/NETL CO₂ Saline Storage Cost Model

Integration with Additional FE/NETL Models



FE/NETL CO₂ Saline Storage Cost Model

- **Further details at 1 PM – Haselton Room.**
- **We will have a table setup at the Poster Seccession this afternoon to further discuss and demonstrate the FE/NETL CO₂ Saline Storage Cost Model.**
- **We will also solicit cost information and observations for the model.**